

# *Tet Park*

HOTELS

DELIGHT YOUR SENSES WITH  
AWARD-WINNING CUISINE!



JUL - SEP 2019



# Kia Ora! Welcome to Jet Park Hotels



Well it has certainly been a busy quarter for Jet Park Hotels with the opening of our third and newest property Jet Park Hotel Hamilton Airport. We were officially handed over the “keys” on the 13th May – now the hard work begins! The hotel will undergo a full refurbishment in the coming months which is very exciting and will transform the property entirely. The hotel offers fabulous conference facilities and 62 accommodation rooms right at Hamilton Airport. Mystery Creek is right across the road and the quaint town of Cambridge is a 15-minute drive as well as the sporting hub of Lake Karapiro close by. In the meantime, under the guidance of Hotel Manager David Latu, the new hotel management team are busy training the existing staff on the Jet Park ways and getting to know our customers in Hamilton. We anticipate the renovations to be complete by the end of October...so watch this space!

Our hotel in Rotorua has also been undergoing some of its own refurbishments. We have renovated the ground floor bathrooms, which includes complete re-tiling, removing the old spa baths and replacing them with stand alone showers, providing these spaces with a fresh and modern look. The swimming pool has also been freshened up with a repaint. Chef Matt has produced a new hearty winter menu to tempt your taste buds – no reason to step out into the wickedly winter nights of Rotorua when you can dine in.



Winter has also seen Jet Park Hotel Auckland Airport launch its new winter menu, Chef Veenal has certainly created some classic winter dishes to satisfy everyone’s taste. The braised lamb shank with roasted garlic mashed potato and greens is my pick – yum! Our recently promoted Pastry Chef Mohammed debuted his dessert menu – I have tasted them all and it is impossible to pick my favourite – so I would just encourage you to try them all one at a time – you will not be disappointed!



Jet Park Hotel Auckland Airport celebrates its 21st birthday this quarter. We will be celebrating this amazing milestone with our team in August with a staff bingo night. On this memorable occasion we will also be paying tribute to extra special staff who have reached their 10-year work anniversary. A

huge congratulations for achieving this milestone goes to Ashley Schierhout, Teariki Heather, Ifrana Khan, Sharifa Bi, Alister Daniels, Salmin Khan and Arun Kumar. Thank you for your dedication, hard work and commitment to delivering exceptional service to our guests.

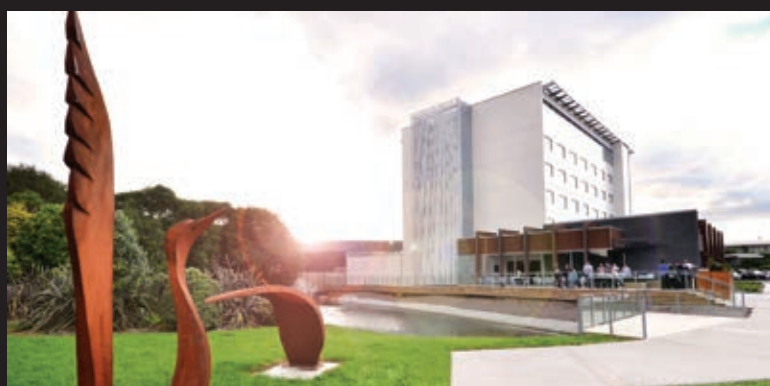
There is plenty more detail and information about all the wonderful offerings and news across our three properties to read throughout this magazine. Enjoy!

Don't forget - We love feedback, so please do get in contact with us! Wishing you an enjoyable stay.

Kind regards,

A handwritten signature in black ink, appearing to read "Nicole".

Nicole Lawson  
Group General Manager





# *What makes us different*

## *Jet Park Hotels' charities of choice*



Jet Park Hotels are committed to being supportive and proactive in the community, and in so doing, support community fund-raising events and charities. This month, stacks of chairs, over 100 beds, linen, crockery and glassware, TVs, curtains and more have all been kindly donated to the Waikato Women's Refuge from Jet Park Hotel Hamilton Airport, currently undergoing refurbishment. This donation will be put to good use refurbishing our safe houses and giving to our families in need.

## *A great hotel choice for pet lovers!*



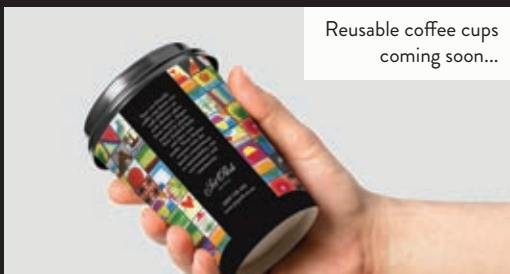
Jet Park Hotels understand that your pets are part of your family and we'd like to make it easier for you to travel with them. We'd like to introduce you to our 'Pet-Stay Rooms.'

Our pet stay rooms are modern and spacious and offers every comfort to ensure that your stay is memorable. Complete with tiled floor for easy clean-up, pet bed with duvet/blanket, food, water bowl, pet treat/biscuits- these rooms will ensure your 'whole' family is comfortable and happy.

## *Another step towards sustainability*

We believe that environmental sustainability is the responsibility of every individual, business and organisation. Ensuring the environmental health of our country and our planet for future generations is something we take seriously. Jet Park Hotels has over 60 responsible tourism initiatives in place, here are some of the steps we have taken to reduce our carbon footprint.

Removal of plastic water bottles and plastic bin liners in guest rooms, removal of plastic straws, and plastic jam containers, eco-friendly bamboo pens, installation of EV chargers, custom made body product dispensers to reduce waste from small, individual plastic containers.



## *Chief Concierge, Bunny recognized at Les Clefs d'Or*



The 25th Anniversary of Les Clefs d'Or (est. 1994) was held with a glittering gala dinner and ball at the Cordis, Auckland CBD on 2nd June 2019.

Our very own Bunny Spyve, Chief Concierge at Jet Park Hotel Auckland Airport, the only woman to have achieved the accolade of Golden Keys status, was recognized for the amazing work done over the years. Having worked with Jet Park Hotels for over 17 years, Bunny's knowledge and experience is invaluable and she has helped many guests over time.

## *Bob's Corner*



### *Travelling with animals*

Have you ever tried to sneak away for a quiet holiday on your own, without your animals? Impossible! Animals have an in-built sixth sense that knows what you're up to. As soon as the suitcase comes out of the closet, and is half packed, the cat will miraculously appear to settle in the remaining half, making the completion of the packing task virtually impossible. The cat is simply reserving its space in your bag for the trip.

One cannot blame our animals for this erratic behavior as they are, after all, one of the family, and do not deserve to be left out when there are family excursions to be had!

Fortunately, as active sponsors of the SPCA, our good friends at Jet Park Hotels know and understand animals, and have made special provisions for them, and you, to holiday happily together. Introducing 'pet stay rooms'- Complete with tiled floors, comfortable pet beds blankets, and yummy food to provide your animals with all the comforts of home, to which they are of course accustomed. Holiday together at Jet Park and they won't even miss you!





# *Your stay at Auckland Airport*

## *Space for the entire family*



Our Family Suites are ideal for families who want some extra space to stretch out and relax in. Enjoy the privacy of your own Queen bed, en-suite, separate lounge/dining area, and kitchenette. This room interconnects with our luxuriously appointed twin rooms with two double beds - perfect for the kids. Complete with toys, Nickelodeon Junior and extra fluffy towels!

## *Need a quiet nights sleep at Auckland Airport?*

We are pleased to announce that 24 rooms facing Cardinal Logistics have been fully sound-proofed, with additional glazing completed on 22 May 2019. Another step towards ensuring our guests get a good nights rest! These rooms are ideal for conference guests, incentive groups or families as they offer extra space without compromising on style.



## *Hire our boardrooms by the hour!*



We now offer rental of our boardroom style meeting rooms for only \$65 per hour- this is an economical option for those shorter meetings! The Fantail, Godwit, Kowhai and Pohutukawa Boardrooms are excellent rooms for private meetings of up to 10 people. These are comfortable fully equipped spaces for you to conduct your business meetings. Contact Joanne more information:

**0800 538 466 or [conference@jetpark.co.nz](mailto:conference@jetpark.co.nz)**

## *Happily ever after...*



Whether you're after an intimate celebration or something with all the bling, our inclusive wedding packages are designed to take the stress out of organizing such an important milestone!

With national award-winning cuisine and superb service, your family and friends will be impressed! Experience exclusive use of your own private lounge-bar with magnificent views to Rangitoto. Or perhaps

you would prefer our Kiwi Ballroom, catering for 250 people cocktail style. You may simply prefer a gourmet BBQ on our spacious deck overlooking a beautifully landscaped garden, pond and wetland area. Contact Joanne to know more about our amazing wedding packages:

**0800 538 466 or [conference@jetpark.co.nz](mailto:conference@jetpark.co.nz)**

## *New staff stars*

Say hello to our new Business Development Executive, Maggie Maximiano. With over 6 years of hospitality experience with several hotels, Maggie is an amazing addition to the team! A people's person, Maggie is passionate about the hospitality industry and really enjoys connecting with people; "... Everyone has a story to tell." Maggie is originally from the Philippines, where hospitality comes natural to people.



## *Time for a cozy winter escape?*



Grab 21% OFF rooms, when you book direct with us! Available for new bookings from now until 31 Oct 2019. T&C's apply.

## *Park and Fly!*



Worried about secured parking while away? Let us ease your load! Enjoy the convenience of our airport parking service.

Jet Park Hotel Auckland Airport now offers an airport parking service- even if you don't stay with us. Pay only \$7 per day up to 14 days, then \$5 per day after 14 days. (T&C's apply).

Call 0800 538 466 for more information.

## *Exclusive low rates... anytime, any room!*



Book direct with us to receive **12% OFF** room rates on all room types all year round! We guarantee to have the best rates if you book direct with us- No other travel booking site can offer these rates!

Are you a corporate staying with us? If you are on a negotiated volume business rate - You're a winner already!



# Dine at Auckland Airport

Warm yourselves up with our new winter menu!



Delight your senses with award-winning cuisine. Our Kitchen team take great pride in creating seasonal menus using the best quality locally sourced ingredients. Our winter bistro menu combines a delicious mix of comfort food and fine dining options, or try our shared plates.

Experience cuisine that will please any palate, and find the perfect accompaniment to your meal amongst our selection of fine New Zealand wines or local craft beers. Bring your colleagues, loved one or family along to our restaurant and bar- serving breakfast, lunch and dinner daily from 5am until 11pm.

## Quick Refuel at Kōura Café

No time to sit down for our amazing dining experience? Our Kōura Café has a superb selection of freshly made sandwiches, salads, bagels, slices and muffins- all of which can be taken away with you. Make sure you try our delicious and caffeine-free range of Latté Lab hot drinks, organic Kombucha and home-made chocolates and macaroons.



We also have lovely gift boxes so you can take home these delectable treats, perfect for yourself or a loved one! We look forward to welcoming you at the Kōura Café- open from 5am until 10pm, located in the main hotel lobby.

## Enjoy a unique function with us

We can create a tailor-made experience for your group, whether large or small, so you have a relaxing and thoroughly enjoyable experience. No need to worry about driving after you've had a few drinks, or the cost of taxis or parking- stay with us and make a night of it. Take a look at the options below, and Jabez will work with you to create a tailor-made experience!  
**+64 9 255 4142 or [jabezl@jetpark.co.nz](mailto:jabezl@jetpark.co.nz)**

Exquisite Group Dinners



Canapés with a View



Kōura Café Outcatering



## Chef's corner



### Classic Zingy Dressing

Need more greens in your diet? This easy and delicious salad dressing recipe is so good it will make you want salad for every meal! Great for that crunchy green salad at a family BBQ.

This recipe makes almost 250ml of dressing and the great thing is that you can store it in the fridge for up to 3 months!

#### Ingredients:

Olive oil	250ml
Honey	50ml
White vinegar	60ml
Balsamic vinegar	8ml
Wholegrain seeded mustard	50ml
A small dash of Tabasco	
Finely chopped fresh mint leaves	

**Method:** Simply blend together all the ingredients well in a blender or using a stick blender and then slowly add the oil until it becomes creamy/thick.

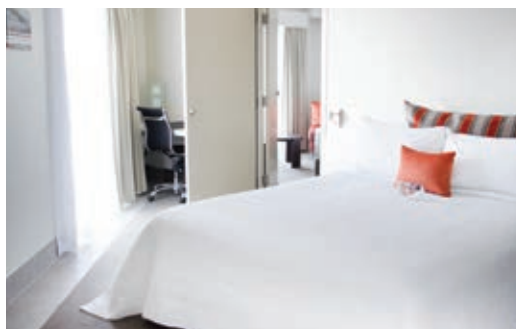
Voila! Done!





# *Plan your adventure at Rotorua*

*Relax in comfort and style!*



Our Family Suites are the perfect choice for families who want some extra space to stretch out in and unwind. Complete with 2 rooms- one with a lounge and dining area, plus kitchenette, and the other separate adjacent room with King size bed. En-suite bathrooms have a spa bath and a full range of our unique Park Spa amenities. Our Family Suites come complete with toys, books and cushions, Sky television with kid's channels and complimentary WiFi- lots to keep the children entertained!

## *Things to Do in Rotorua*

Explore the famous geothermal region and discover everything the area has to offer. Become entranced with walks through native bush or take a stroll back in time through a traditional Māori village. Indulge in a visit to the Polynesian Spa or check out natural thermal pools that have been hailed for their healing benefits since the early 19th Century. After more of a thrill? Try zorbing, a few laps on the luge, or an exhilarating bike ride through the Redwoods.

Our friendly staff at reception are also locals to the region and more than happy to make recommendations, organise bookings, or provide more information on any of the activities you may be interested in.



## *Delicious new winter menu!*



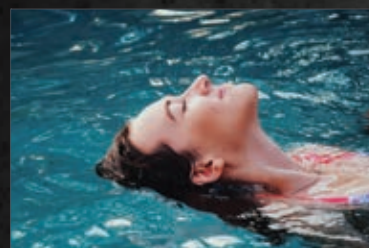
Exploring our exciting region can really work up an appetite and our Te Purū Café is the perfect place to refuel after a busy day packed with activities and adventure. Located in the heart of the hotel, enjoy a relaxed atmosphere where you can reflect on the highlights of your experiences. Sit back and indulge in fresh, seasonal cuisine while you take in a tranquil pool view.

The perfect way to start your day is with our hearty breakfast options. Our cooked breakfast range includes delicious items such as Belgian waffles, hotcakes and eggs benedict. Feeling really hungry? Our Big breakfast is sure to satisfy any appetite! Did you know we have our very own Jet Park Signature espresso? Our Popcorn Latté consists of a double shot of espresso with popcorn infused milk- Yum!

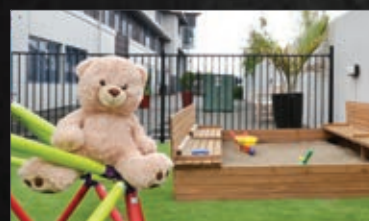
## *Things to do at the hotel*



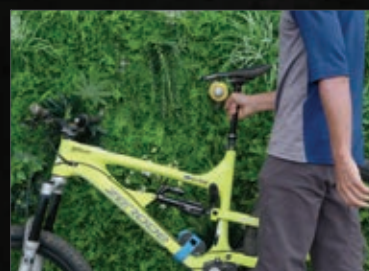
Make the most of our excellent outdoor facilities. A dip in the swimming pool is a must, and make sure you take time out to relax in our outdoor spa pool (ideal at night-time!).



We offer outdoor seating pool-side to enjoy a drink or snack from our all-day Te Puru Café, or feel free to enjoy a game of life-sized chess. For the kids, there's an outdoor and indoor playground to keep them happy.



There's a bike storage and wash area available for those energetic to venture the many amazing bike tracks in Rotorua. Plus, our reception are more than happy to provide advice on where to go, help with your bookings and local attractions.





# Your stay at Hamilton Airport

## The Jet Park Experience



A short stroll from Hamilton Airport, get straight off the plane, over to Jet Park Hotel Hamilton Airport. Our hotel is a space to recuperate after your journey, or rest before it begins. Explore the local attractions, or stay in and prepare for your upcoming conference. When you stay with us your time is entirely your own.

Enjoy contemporary dining in the bistro restaurant and relax in our green spaces! A selection of fine New Zealand wines are available to compliment your meal. To complete the ultimate dining experience our friendly staff will tend to your needs with warm, efficient care.

## New staff stars



Staff from left to right: Pranay Lokare- F&B Manager, Tapasya Joshi- Front Office Manager, David Latu- Hotel Manager, Eleanore Buck- Head Housekeeper Manish Kamath- Head Chef.

Say hello to our amazing team at Jet Park Hotel Hamilton Airport. The hotel is undergoing a multi-million-dollar makeover to deliver four-star accommodation and conference facilities plus an outstanding restaurant for the region.

Jet Park Hotels prides itself on offering outstanding ‘family feel’ and efficient service. Next to our customers, our team is without a doubt the most important aspect of our hotel.

## Gather in style

We understand that the magic happens when you get together and collaborate. Our spaces are designed to encourage creative thinking, provide the opportunity to work as one, and break into new territories with your ideas.

Experience the quality facilities and carefully designed spaces that will ensure your event goes off without a hitch. From small, intimate meetings, to events of up to 200 people, our flexible conference room options can provide an ideal setting for your next gathering.



During breaks, take a reinvigorating stroll in the garden and enjoy a cup of tea or coffee in the sunshine. Our unique destination in the countryside paired with our immaculate attention to detail will mean your event, conference, or workshop will be one to remember.

## Massive upgrade planned for Hamilton Airport



Hamilton Airport is to undergo a multi-million dollar upgrade to its terminal buildings and carpark as passenger numbers continue to grow.

The work, scheduled to start in early 2020, will take 12-18 months and will see a complete refurbishment of the terminal. The project will mean an improved departure area, new furniture, new flooring, new interior colours, more dedicated workspaces with charging units and digital display units to showcase local history, innovation, tourism and events.

The new look will include artwork from Waikato-based artists as well as living green walls.

Stage two of the project is likely to include improvements to the terminal entrance, more landscaping and trees, a pedestrian-friendly plaza and an improved drop-off area for passengers. Rental cars will be relocated out of the main carpark, the taxi stand will be moved and the road entrance into the airport reconfigured and improved.

Article by: Rebecca Corbett  
Commercial Growth and Marketing Manager- Hamilton Airport

Photo: An artist’s impression of the refurbished terminal.

*Jet Park*

HOTELS

**AUCKLAND | ROTORUA | HAMILTON**

0800 538 466 | [JETPARK.CO.NZ](https://jetpark.co.nz)