



Dear Guests,

A very Happy New Year to you and your loved ones!
 We're happy to welcome you back to the Jet Park Hotel and hope that you will enjoy the wonderful new services we have planned throughout the year. Please feel free to provide any feedback on our Guest Comment form in your room- we value your opinion.
 Our most up to date news and information is placed onto our website blog, and we invite you to take a look!

The Jet Park Hotel Team

We're one of NZ's Top 25 Hotels!

Trip Advisor attracts thousands of online visitors each year who are looking for some honest "been there/done that" guest reviews for hotels and attractions. We are proud to announce that the independent guest ratings for our hotel have earned us a much coveted "2014 Travellers' Choice" award. We are now ranked 13th for New Zealand Hotels, 8th for Auckland Region Hotels and 2nd choice in Auckland for business hotels!

Thank you to our guests who have posted their own comments online.



Dine with us- not your average airport hotel experience.



One of the points of difference we strive for as an airport hotel is that our food and beverage offering is above expectation- and on par with what travellers can expect in a "city hotel". Currently on offer are a range of summer dining options- enjoy the beautiful evenings overlooking our pool with an outstanding a la carte menu, a Friday BBQ beside the pool, our wood-fire pizzas in the bar, or room service. Te Maroro Restaurant holds the 2013 NZ Beef and Lamb "People's Choice" award, and is open for breakfast from 5am, lunch, and dinner daily.

Our Team- the heart of a hotel.

Ever wondered who's behind the scenes of a busy airport hotel? You can view profiles of the wonderful team that make up the "heart" of Jet Park Hotel on our website- simply search 'Meet our Team'. We are proud to have such passionate, talented individuals working here, and we believe it helps that Jet Park Hotel is NZ owned/operated and has a culture of "family" that is imparted to our staff which shines through in the care extended to guests. Our employment turnover rate is very low for hospitality and more than half of our 112 staff have worked at the hotel in excess of 2 years.

Staying in Auckland for longer?

There are many excellent local attractions right on the hotel's doorstep. We have bikes for hire to explore areas such as Ambury Park Farm, Otuatua Stone Fields or Mangere Mountain- these regional parks are also excellent for a walk. Other attractions include: Villa Maria winery, Butterfly Creek, Rainbow's End, Auckland Botanic Gardens, Formula E Race Karts or if you feel like grabbing a shopping bargain- try Dressmart in Onehunga. Ask our Concierge for further information.



February - March 2014



Frequent Traveler?

Ask Reception to join our loyalty rewards programme



In our lounge bar and lobby areas. See bar staff or reception for your code.



FOLLOW US:

www.jetpark.co.nz/blog



Jet Park Hotel's Environmental, Sustainable and Social Care Initiatives

Dear valued Guests

Welcome and thank you for choosing to stay at Jet Park Hotel - a great choice in "Best environmental practice". We believe in protecting our beautiful New Zealand environment for future generations, and we have developed a plan you can be a part of. Awarded a Qualmark GOLD-Enviro rating in 2011, 2012 and 2013, a testament to the fact that the environmental health of our country and our planet for future generations is something we take very seriously. We welcome your feedback on our environmental or social policies. Please use the in-room guest comment cards.

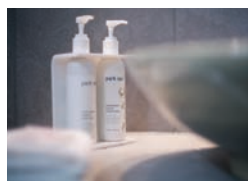
Responsible Tourism Initiatives

Jet Park Hotel has **over 60 Responsible Tourism Initiatives**; of particular note:

- Energy saving by turning off lights when guests are away from their rooms
- Replacement to energy efficient light bulbs wherever possible
- Solar heating panels for hot water energy efficiency
- Herb garden on-site
- Rubbish/recycling of waste eg. Recycling food waste into compost, containers, paper etc.
- Water savings measures including flow restrictors
- Eco-friendly Park Spa amenity range (low allergy/ NZ made)
- Continual 'audits' aimed at future reductions in power consumption

Room Key Cards

These are designed to control the lights in your room – so that when you're out, lights are off to save power. You may wish to consider turning off your TV and heating/cooling too, when not in the room. We have installed a number of power- saving low-energy use lights.



**"Park Spa"
 Amenity Range**

We are pleased to supply you with a low-allergy, NZ made body product range made from Green Tea with the healing properties of NZ Manuka. We have created our own product dispensers for some of our range to reduce daily waste from small, individualised plastic containers. Our hair products and soap are still available in individual containers and these are recycled after use.

Water

Water is precious – even in a country where it rains so much! Flow restrictors have been introduced to our shower heads to save both water and gas used for heating. Our toilets also use less water for flushing than other systems. We have also planted native trees and mulched our gardens to reduce the need for garden watering. You may wish to help save water by turning off the tap tightly and avoiding leaving water running. If you are staying with us for several days, please feel free to decline a towel change from our housekeepers.

Rubbish and Recycling

Systems are in place to ensure that our waste is separated and as little as possible ends up in waste disposal. We separate paper, recyclable materials, paper and cardboard, as well as much of our compostable food waste from our general rubbish. Please feel free to leave your recyclable waste in your room next to the bin to be included with our recyclable waste.

Our Unique Local Environment



If you have some spare time during your stay, you may wish to explore some of the unique volcanic areas and historic Maori settlement sites located a short drive from the hotel. These include Mangere Mountain, Ambury Park, and the Otuatua Stone Fields. **For maps and transport- see reception.** We have planted the hotel grounds in predominantly native vegetation – Flax, Cabbage Trees, Manuka and Kowhai. These attract native bird life to the site and create a small 'green belt' in a fast-developing industrial area. Please feel free to enjoy a stroll around our grounds!



Did You Know?

The kokako is one of NZ's endangered and endemic (that is, found only in New Zealand) birds (650 pairs left @ Nov 2012). A joint project between the Auckland City Council and Department of Conservation, The Kokako Project was created to protect and save the kokako. Jet Park Hotel is proud to be a part of this project.

How Can I Help?

Did you know you can help us to look after the beautiful landscapes that are New Zealand? Please leave any recyclable waste e.g. paper, newspaper, magazines, any glass or plastic bottles beside the bin in your room to be included in our recycling system.



JET PARK HOTEL ENVIRO AWARDS:

- 2013:** Hotel Industry Environmental Initiative Award
- Westpac Auckland South Business Awards 2013 WINNER - Excellence in Social Responsibility and Sustainability
- 2012:** Hospitality Association of New Zealand Finalist - Best Environmental, Sustainable and Ethical Practice
- 2011:** Qualmark Enviro-GOLD award.



**100% NZ OWNED
 & OPERATED**

www.jetpark.co.nz

'Bed & Board' Sponsorship of SPCA Auckland

"SPCA is a cause close to our hearts, and has long been the chosen charity of Jet Park Airport Hotel & Conference Centre," says owner, Liz Hermann. We began supporting the SPCA the same time as Jet Park Hotel's opening back in 1998. The relationship has gone from strength to strength, and since 2012 has been a major 'Bed and Board' sponsor of the SPCA Auckland.

