

Social & Environment

JET PARK HOTELS' CHARITIES OF CHOICE

SPCA **Supporting the SPCA-** In 2012, Jet Park Hotel, Auckland became a major 'Bed and Board' sponsor of the SPCA Auckland. With the inclusion of a functional Education Centre at the SPCA Auckland, we are happy to refer clients to their Conference Centre when we are fully booked and vice versa

Kokako Bird Conservation- Jet Park Hotel, Auckland is involved in the conservation of New Zealand's endangered Kokako bird in the Hunua Ranges. We work along-side Auckland Council and "Friends of Hunua Ranges".

Women's Refuge- Jet Park Hotel, Auckland also supports Women's Refuge with donations of good used clothing and useful household items and furniture.

RESPONSIBLE TOURISM INITIATIVES

Jet Park Hotel has over 60 Responsible Tourism Initiatives; of particular note:

- Energy saving by turning off lights
- Energy efficient light bulbs (LED)
- Solar heating panels for hot water
- Eco-friendly Park Spa amenity range
- High quality bio-degradable paper straws in the bar
- Water saving measures, e.g. flow restrictors, low flush toilets
- Rubbish/recycling of waste, e.g. recycling food waste into compost, paper, glass
- Continual 'audits' aimed at future reductions in resource consumption



Solar heating panels for hot water



Bio-degradable paper straws

ENVIRO FRIENDLY PARK SPA AMENITY RANGE

We are pleased to supply you with a low-allergy, NZ-made body product range made with the healing properties of NZ 'Mamaku' (Black Fern). We have created our own product dispensers for some of our range to reduce daily waste from small, individualised plastic containers. Our hair products and soap are still available in individual containers and these are recycled after use.



- Hair care products are all made using bio-degradable formulations, are free from animal and petrochemical by-products and are paraben free.
- Hair & skin care products are made from sustainably sourced, GE free ingredients.
- Cardboard boxes are made from 100% recycled, oxygen bleached carton board
- Caps and bottles are fully recyclable and partially used soaps are returned to the manufacturer to be recycled into biofuel and bio-degradable industrial cleaning compounds
- Formulations are tested on humans, not animals!

HOW CAN YOU HELP?

You may wish to help save water by turning off the tap tightly and avoiding leaving water running.

If you are staying with us for several days, please feel free to decline a towel change from our housekeepers.

Please leave any recyclable waste e.g. newspaper, magazines, any glass or plastic bottles beside the bin in your room to be included in our recycling system.

Room key cards: These are designed to control the lights in your room, so that when you're out, lights are off to save power. You may also wish to consider turning off your TV and heating/cooling too, when not in the room.

If you're walking on New Zealand's beautiful trails/ bush walks, always wear clean shoes and use shoe spray stations to prevent the spread of 'Kauri Die Back Disease'.

STAFF KIDS FUN DAY!

Courtesy of Jet Park Hotel Auckland, a group of 25 children including staff parent helpers in tow, enjoyed a day of amazement and learning at Butterfly Creek in the April 2018 school holidays.

From the incredible life-sized dinosaurs in Dinosaur Kingdom, including real fossils and facts galore, to an intimate Kiwi Encounter- whereby children got to view the shy and delightful Kiwis in their own habitat!

Jet Park Times

ESTABLISHED SINCE 1998



Kia Ora!

Welcome to Jet Park Hotel Auckland. We hope you enjoy your stay! Should you require anything at all, please contact Reception from your room - Simply dial 0.

If you have any feedback that will help us improve our guest services or facilities, please feel free to fill out either our online guest feedback survey that you will receive after your stay; alternatively there is a survey form in your room- it takes just a few minutes, and we really appreciate your time! We also encourage you to place feedback on TripAdvisor- there's a link on both our Auckland and Rotorua websites, if you go to "About Us" and then click on "Guest Feedback" or directly on TripAdvisor.

If you are travelling to Rotorua this year, we'd love you to be our guest at Jet Park Hotel Rotorua. Centrally located, 5mins from Rotorua town center, we are ideally situated for you to enjoy the many exciting activities the region has to offer!

We look forward to welcoming you back in future. Happy travels and good health!

Warm Regards,
The Jet Park Hotel Team

AMAZING WINTER SALE!

15% off any room, WiFi and 10 days car storage! Quote 'Winter Sale' to get 15% off our best available rate when booking direct with us by phone, email or online. Stays until 31st July.

KEEPING NEW ZEALAND GREEN!



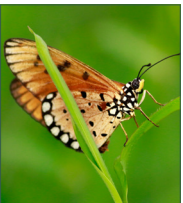
We are excited to announce that we now offer an electric vehicle charger, located by the conference Centre- EV link parking area. EV plugs are available at Reception for both T1 and T2 charging.

Jet Park Hotel believes that environmental sustainability is the responsibility of every individual, business and organization. We have over 60 responsible tourism initiatives in place. When choosing to stay with us, guests can have total confidence they are selecting a hotel who stakes its reputation not only on the standard of its accommodation, facilities and customer service, but also on its pro-active and genuine approach to environmental sustainability!

LOCAL ATTRACTIONS NOT TO BE MISSED!



A region of diverse landscapes, Auckland has a multitude of walking tracks to suit. Otuatua Stone Fields or Mangere Mountain are close to the hotel.



Traveling with family or friends? Fun things to do are at the hotel's doorstep - Butterfly Creek, Ambury Farm and Rainbow's End plus more!



With 2 amazing 18-hole courses, Treasure Island Adventure Golf has a great Pirate theme; fun for all ages and floodlit for night golf.



With over 100 stores, Dress Smart Outlet shopping centre in Onehunga is perfect for bargain hunters! (15 mins from the hotel).



Sample the fine range of Villa Maria wines in Te Maroro Restaurant. Also, close to the hotel is the world-renowned Villa Maria winery!



Fill your basket or bag with a colourful array of fresh produce and artifacts at the Clevedon Market on Sunday mornings. (30 mins south of hotel).



Over 10,000 plants both indigenous and exotic, The Auckland Botanic gardens offer a huge array of plant species spread over 64 acres!



Enjoy white water rafting, kayaking and paddleboarding in the heart of Auckland! The Vector Wero Whitewater Park is perfect for family fun and team building!

Jet Park Airport Hotel and Conference Centre
63 Westney Road, Mangere, Auckland 2022
Ph: +64 9 275 4100

Jet Park Hotel Rotorua
237 Fenton Street, Rotorua 3010
Ph: +64 7 350 2211

Follow Us



Reservations Freephone 0800 538 466 • reservations@jetpark.co.nz • Book Online: jetpark.co.nz | jetparkrotorua.co.nz



Dine with us

NEW BISTRO MENU FROM JUNE 6!

Whether you are dining by yourself, with friends, colleagues or family... we invite you to sit back, relax and enjoy exceptional dining at Te Maroro Restaurant. Our new Bistro menu combines a delicious mix of comfort food and fine dining options, or try our shared plates.

Our friendly wait staff will offer advice on the perfect beverage to suit. Our Bistro menu is available from 1100 - 2300 in Te Maroro Restaurant, Indaba Bar or for room service. Menus can be found at the back of your in-room compendium. We also offer late night snacks from 11pm until 5am. To reserve a table, contact the Restaurant by dialing 8995 from your room. Enjoy!



HAND-CRAFTED TREATS BY OUR PASTRY CHEF, DOMINIC D’SOUZA



Get your friends, family or colleagues together to enjoy a unique function with us! Our talented Pastry Chef, Dominic D’souza can create a tailor-made experience for your group, whether large or small, so you have an unforgettable experience whether it be a high tea, birthday celebration, anniversary, small wedding or a work function! We can do it all!

Says Dominic, “Creating, coming up with new stuff that makes myself and others happy... I work as a chef in pastry with a passion to achieve perfection and the quest for perfection gives way to a quest for newness and the impulse to create.” With a passion for perfection, Pastry Chef, Dominic has crafted the amazing “Petit Fours” on our Dessert Menu. Make sure you try them next time you stay!

START YOUR DAY THE RIGHT WAY!



Flexible breakfast options including Express Breakfast from 5am, Continental and Full Cooked Buffet options, as well as our popular À La Carte plated and ‘On the Side’ options.

In a rush? Grab your morning coffee, freshly made by our barista at our coffee bar.

RECIPE OF THE MONTH

Kindly supplied by Veenal Reddy, Executive Chef, Jet Park Hotel Auckland Airport



Panko crumbed smoked salmon and cheese croquette with Potato espuma and orange rocket salad.

SMOKE SALMON CHEESE BALL (MAKES 29 PORTIONS)

Ingredients: Salmon 1kg, Butter 300gms, Flour 300gms, Coriander 40gms, Smoked cheddar 200gms, Salt 10gms, Chili 10gms, Mustard 20gms, Panko crumbs 200gms, Eggs 4 each, Flour 380gms, Milk 100gms

Method:

- Smoke salmon using manuka chips.
- Make roux using flour and butter. Add milk and cheese slowly.
- Once the roux is thick add your smoked salmon and mustard, chili & coriander seasoning. Do not over stir.
- Spread out this mixture in a tray and let it cool down. Roll out into 25gm balls and cover it with panko crumbs. The smoked salmon cheese balls are now ready for deep frying.

POTATO ESPUMA

Ingredients: Agria potato 800gms, Smoked oil 2gms, Salt 8gms, Pepper 2gms, Cream 20gms, Lemon 110gms

Method:

- Peel Agria potatoes and boil it with the cream. Once the mixture is soft and tender take it out and add it to the blender along with other ingredients to make a purée.
- Fill your potato purée into a cylinder and charge it with gas.
- Add fennel, orange and chives salad on the side. Enjoy!



Offers & Updates

GOT A SPECIAL EVENT COMING UP?

Save time and money with our exclusively designed “experiences”. Impress your family, friends or colleagues with an award-winning, modern, 250-person venue, exceptional dining, complimentary car parking + more! Take a look at the inclusions below, and make sure you register your interest as soon as possible as these experiences will be snapped up! Jabez will work with you to tailor-make your experience including the food and beverage options you require. **Contact Jabez Lobo: jabezl@jetpark.co.nz | 021 720 409**

CANAPES WITH A VIEW



Exquisite canapés created by our talented chefs and served in your own private lounge-bar with superb 5th floor views to Rangitoto.

GROUP DINNERS



Exceptional 3-course à la carte dinner with private access to the top floor lounge and bar area. Includes beautiful table settings.

HIRE WHOLE HOTEL & CONFERENCE CENTRE



Exclusive use of your own ‘5-level’ ultra-modern hotel for your next conference! 60 Modern guest rooms, Two levels of conferencing space + more!

From \$2500

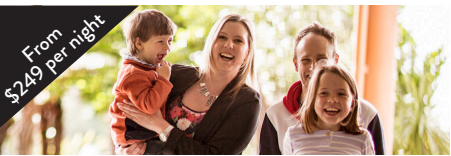
ROTORUA TEAM-BUILDING EXPERIENCE

Spoil your team with an overnight team-building experience to the “adventure capital” of the North Island - Rotorua. This package includes: Accommodation, WiFi, Breakfast, Team-building activity, Parking, Spa/ swimming pool, Welcome drink, Boxed lunch + more!

Enquiries: jabezl@jetpark.co.nz | 021 720 409

FANTASTIC WEEKEND FAMILY PACKAGES

The hassle-free way to travel and experience some real treasures in the Auckland Airport region. We’ve put together some fantastic itineraries that will suit those families or larger groups staying overnight. We’ve even negotiated special discounts for superb local attractions, to save you money!



FAMILY WEEKEND GETAWAY:

Includes 2 nights accommodation, 2 full cooked breakfasts for 2 adults/2 children, WiFi, return Airport shuttle, car parking, and 10 days car storage.

BONUS: Stay with us and get a discount at Butterfly Creek: \$75 Family Day Pass including a FREE train ride!



FAMILY OVERNIGHTER PACKAGE:

Includes twin-share accommodation for 2 adults / 2 children. Enjoy our superb full cooked breakfast, WiFi, return Airport shuttle, and car parking.

BONUS: Stay with us and get a discount at Butterfly Creek: \$75 Family Day Pass including a FREE train ride!



‘Unlock Private Offers’ for the best room rates online! You will save 12% on our best flexible rate.

For quick booking, simply go to our website, click on the BOOK NOW button, and select “Unlock Private Offers”. Sign up with your email, facebook or your twitter account.

• **Personal touch- talk to us today!** • **Instant booking confirmation** • **No hidden fees**

We guarantee to have better rates than other travel booking sites like Booking.com & Expedia. Corporate staying with us? If you are on a negotiated volume business rate - You’re a winner already!

0800 538 466 | reservations@jetpark.co.nz
jetpark.co.nz | jetparkrotorua.co.nz



GET REWARDED FOR STAYING WITH US!

Did you know that by simply joining up with our Loyalty Rewards Programme, you instantly get 10% back to you on your total spend i.e. spend \$100 and get \$10 Reward Dollars. These can be used next time you stay with us on accommodation, goods or services. You’ll also receive exclusive offers, and the VIP treatment whilst in-house!

Sign-up is done through Reception- Just a few minutes, and you’re set to start receiving the benefits of staying with Jet Park Hotels! And remember, you can use your reward dollars at our sister property in Rotorua.